

GENERATION & NETWORK

Bay Control IED



NPBC915

The optimal management of electrical power systems is based in particular on the reliability, availability and communication skills of protection, measurement and automation devices.

NPBC915 bay control IED may be applied for various types of control applications. The NPBC915 comes with full current, voltage, power and energy measurement capability and may be equipped with additional I/O depending on application needs. Easy to use and powerful logic programming expands further the application range to more demanding control needs. Optional cards (I/O, communication...) can be inserted depending on application requirements. Large freely programmable HMI display provides quick visualization of the object, alarm and event status.

The NPBC915 communicates using various protocols including IEC 61850 substation communication standard.



- Smart grid control

ANSI CODES

50BF
/52BF

21FL

60

74TC

25

79

Our energy at your service

CHARACTERISTICS

Protection functions

- Breaker failure protection [50BF/52BF]

Measuring and monitoring

- Phase and residual currents (IL1, IL2, IL3, IO1, IO2)
- Voltage measurements (UL1-UL3, U12-U31, U0, SS)
- Fault locator [21FL]
- Current and voltage harmonics (up to 31st)
- Current THD
- Frequency (f)
- Power (P, Q, S, pf)
- Energy (E+, E-, Eq+, Eq-)
- Disturbance recorder (3.2 kHz)
- Current transformer supervision (CTS)
- Fuse failure (VTS)
- Trip circuit supervision [74TC]

Control

- Controllable objects: 5
- Synchrocheck [25]
- Autorecloser [79]
- 8 setting groups

Hardware

- Current inputs: 5
- Voltage inputs: 4
- Digital inputs: 3 (standard)
- Output relays: 5+1 (standard)

Options (3 slots)

- Digital inputs optional: +8 per card
- Digital outputs optional: +5 per card (2 cards max.)
- 2 x mA input + 6-8 x RTD input (2 cards max.)
- Communication media (specified below)

Event recording

- Non-volatile disturbance records: 100
- Non-volatile event records: 10000

Communication media

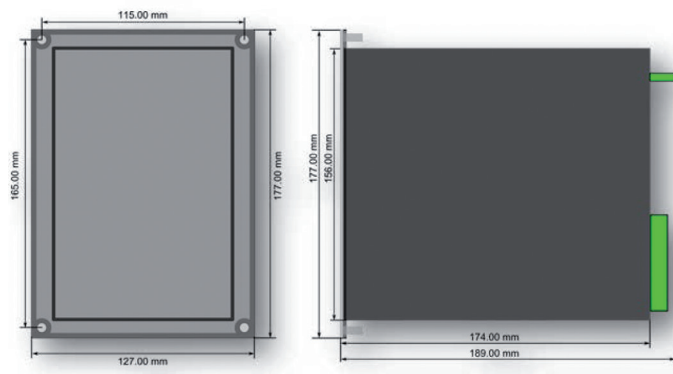
- RJ 45 Ethernet 100Mb (front standard)
- Double LC Ethernet 100Mb (option)
- RS232 + serial fibre PP/PG/GP/GG (option)

Communication protocols standard

- IEC 61850
- IEC 60870-5-103/101/104
- Modbus RTU, Modbus TCP/IP
- DNP 3.0, DNP 3.0 over TCP/IP
- SPA

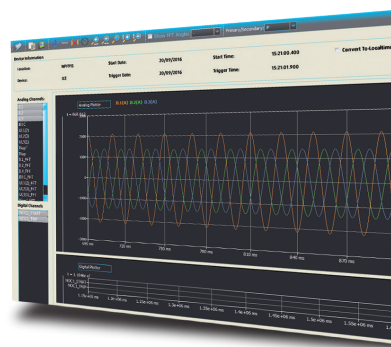
Case

- H, W, D without terminal 177x127x174 mm
- H, W, D with terminal 177x127x189 mm (casing height 4U, width 1/4 rack, depth 210 mm)
- H, W of front plate 177x127 mm
- H, W of cut out 160x106 mm



SMART9 - integrated software

Our user friendly SMART9 (Setting, Measurement, Analysis, Recording, Time-saving) configuration software helps the user get the best from NP900 series relays.



The specifications and drawings given are subject to change and are not binding unless confirmed by our specialists.



CEE Relays Ltd

87C Whitby Road, Slough, SL1 3DR (Registered Office)

Tel: +44 1753 576477 Fax: +44 1753 825661

Web: www.ceerelays.co.uk



A941E